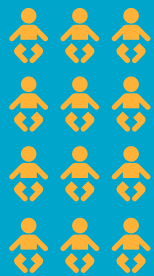


# 2,649



## BABIES BORN

1,363 BOYS

1,298 GIRLS



### 43%

WOMEN HAVING THEIR FIRST BABY

42 SETS OF TWINS

11 OBSTETRICIANS

8 MIDWIVES

16 POST-PARTUM ROOMS

6 BIRTHING ROOMS

### MOTHER'S AGE AT DELIVERY

43.8%

30-34 YEARS OF AGE

25.6%

35 YEARS OF AGE OR OLDER



72% SUCCESSFUL VAGINAL BIRTH AFTER CAESAREAN SECTION (VBAC)

# 23.6%

C-SECTION RATE

# MATERNAL CHILD PROGRAM

## 2017/18 VITAL SIGNS

5.5% DELIVERIES BY MIDWIVES

434

COUPLES TOURED THE MATERNAL CHILD PROGRAM

12

NEONATAL INTENSIVE CARE UNIT (NICU) BEDS

10 PAEDIATRIC BEDS



712 CHILDREN SEEN IN THE BILIRUBIN CLINIC

2,593 CHILDREN SEEN IN THE PAEDIATRIC URGENT CARE CLINIC

1,311 PAEDIATRIC ONCOLOGY CLINIC VISITS

2,100 TOYS DISTRIBUTED BY VOLUNTEER MARJORIE INCLUDING TOYS FOR SIBLINGS

91.8%

SUCCESSFUL BREASTFEEDING RATE WHILE IN HOSPITAL BABIES WHO HAD AT LEAST ONE BREASTFEED IN HOSPITAL

## CUDDLER PROGRAM

FEATURED IN CANADIAN LIVING MAGAZINE

169

COUPLES ATTENDED INFANT CPR

364

NICU ADMISSIONS

307

COUPLES ATTENDED PRENATAL CLASSES

2,843

NICU PATIENT DAYS